

NOME : _____

TURMA : _____

DATA : _____

1. There are beautiful flowers in the spring.

A Outono

B Verão

C Primavera

D Inverno

2. We travel in summer. We go to the beach.

A Verão

B Outono

C Inverno

D Primavera

3. There aren't many flowers in the fall.

A Outono

B Verão

C Inverno

D Primavera

4. It usually snows here in the winter.

A Verão

B Inverno

C Outono

D Primavera

5.  What season is it?

A Winter

B Summer

C Spring

D Fall

6.



What season is it?

A

spring

B

winter

C

summer

D

fall

7.



What season is it?

A

winter

B

spring

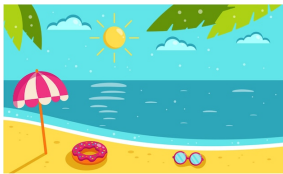
C

fall

D

summer

8.



What season is it?

A

fall

B

spring

C

summer

D

winter

9. The leaves fall from the trees during Autumn.

A

Inverno

B

Primavera

C

Outono

D

Verão

10. How many seasons are there in a year?

A

There are 3

B

There is 3

C

There is 4

D

There are 4